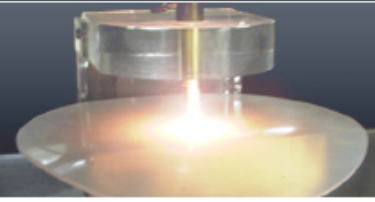




**Martin Testing Laboratories**  
A Division of Materials Technology Laboratories, Inc.



# EMI/EMC Testing

*Your  
Source for  
Test and  
Analysis*



## COMPREHENSIVE CAPABILITIES

EMI tests, EMC tests, TEMPEST tests, as well as comprehensive design support of circuit cards, modules, equipment, subsystems, systems, and facilities are available through our teaming arrangement with Northrop Grumman. Tests are done in the laboratory or in the field. Our test facility in Sacramento (McClellan), California is conveniently located near the Silicon Valley. Electromagnetic surveys of a system or an entire facility can also be done at customer facilities. Name virtually any requirement for electromagnetic interference and electromagnetic compatibility (EMI/EMC) or TEMPEST, and we can meet it - with reliable results.

**WE CAN HELP**

**MARTIN TESTING  
LABORATORIES**

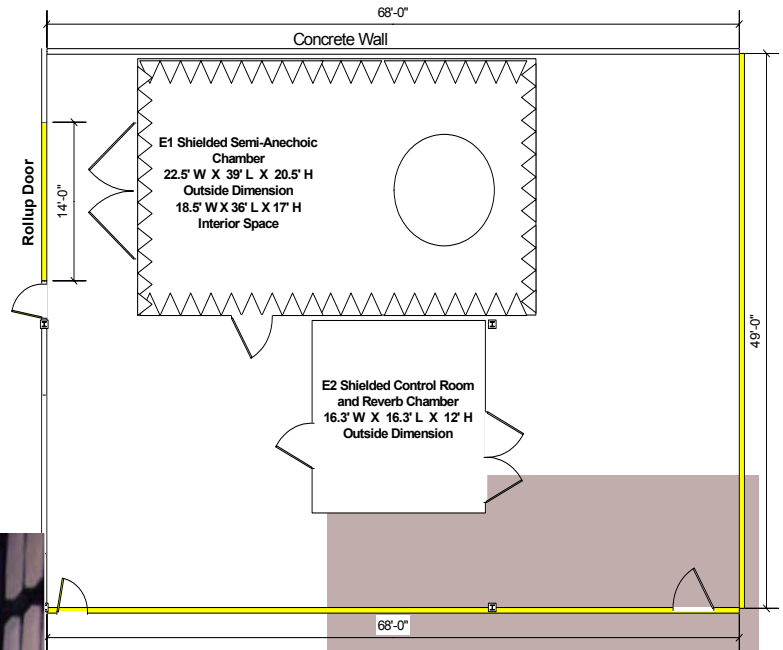
4724 Arnold Ave.  
McClellan, CA 95652

[WWW.MARTINTESTING.COM](http://WWW.MARTINTESTING.COM)

Phone: (916) 920-4110  
Fax: (916) 920-4390  
Email: [perry@martintesting.com](mailto:perry@martintesting.com)

## Platform/System-level Compliance

- MIL-STD-464 EMC
- FAA EMC Safety of Flight
- NACSEM 5110 TEMPEST



## Component/Subsystem-level Compliance

- MIL-STD-461
- MIL-STD-1275
- NSTISSAM TEMPEST/1-92
- NACSEM 5112
- RTCA DO-160
- IEEE STD 299

## Commercial Testing

- FCC (Part 15 and Part 68)
- European (IEC and EN) standards



EMI Test Laboratory's  
5 meter Chamber

## MARTIN TESTING LABORATORIES

4724 Arnold Ave.  
McClellan, CA 95652

[WWW.MARTINTESTING.COM](http://WWW.MARTINTESTING.COM)

Phone: (916) 920-4110

Fax: (916) 920-4390

Email: [perry@martintesting.com](mailto:perry@martintesting.com)